

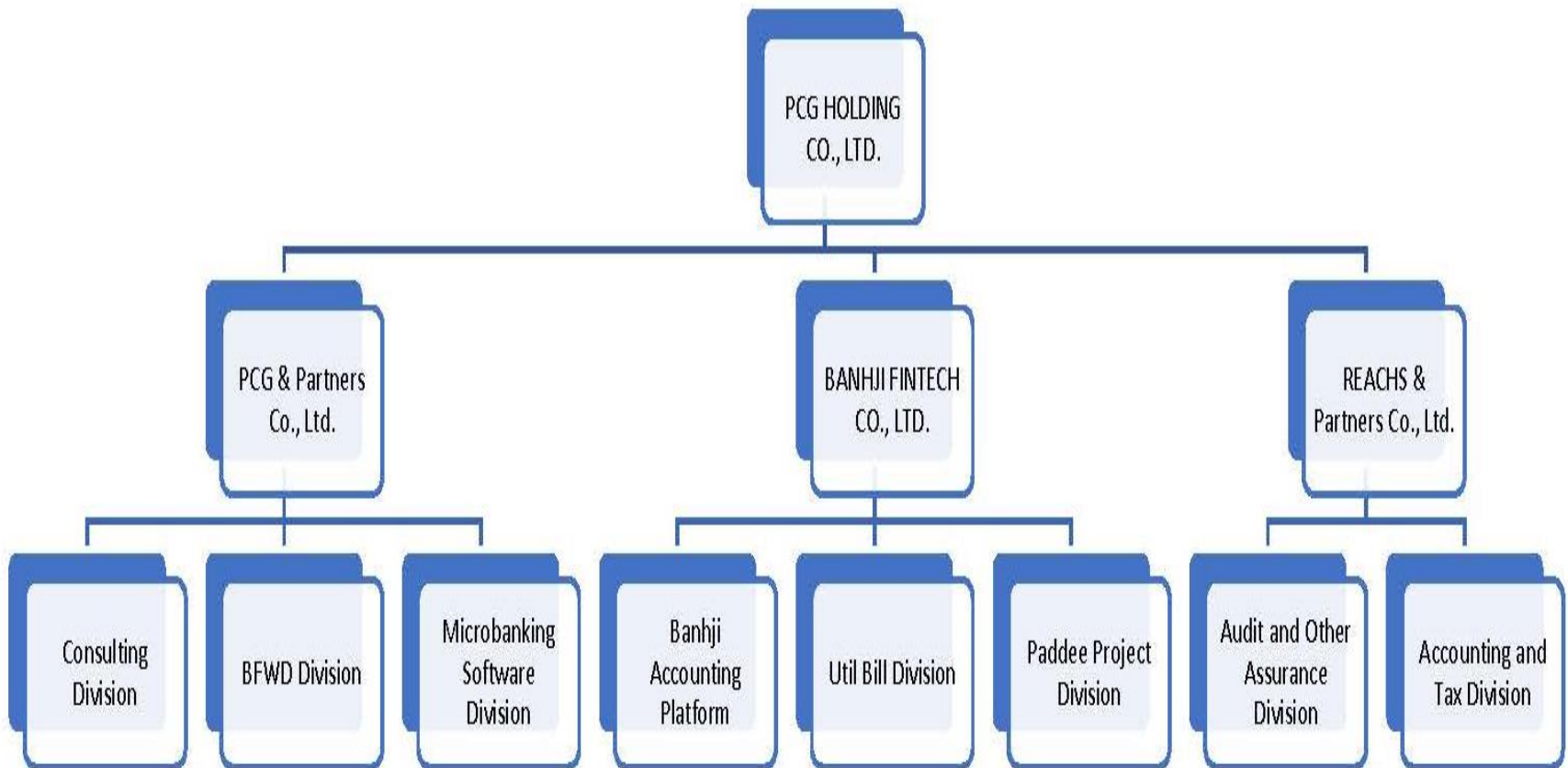
REACHS & Partners

COMPANY BRIEFING

BACKGROUND OF THE GROUP COMPANY

- Established in 2011
- Promoters consist of 6 professional persons, of which 5 is CPA (KH) and ACCA Member.
- The management include 4 partners who specialize in different aspects such as consulting, accounting, tax, business outsourcing and technology.
- There are 100+ employees in our GROUP firms.

COMPANY GROUP STRUCTURE



REACHS & Partners

APPRECIATION AND CHALLENGES

Appreciation on General Department of Taxation

- Digital tax focus:
 - E-filing,
 - Use of windows desktop application for E-filing
 - Document Tracking System, Etc
- Prakas on Tax Obligation for NGO

ISSUES AND CHALLENGES

- Limited knowledge in relation to tax obligation of accountants in NGOs
- Difficulties of the NGO in compliance with the obligation
 - Annual tax return for NGO
 - E-filing
 - Use of windows desktop application for E-filing
- Few doubts that need clarification from GDT
 - Criteria requiring to register separately between business activities and non-for-profit activity
 - Registration of business activity with the turnover below 250,000,000KHR per annum
- Different interpretation in tax law and regulations between different tax officers/ tax administrators

CONTACT PERSON

- Mr. ROEURN BUNHENG, Partner – Accounting & Tax
- +855 11 210 348 or +855 23 230 333
- broeurn@reachspro.com or info@reachspro.com

- Mr. CHANN SAVANN, Manager – Accounting & Tax
- +855 76 608 3333
- savann@pro-cg.com

- Mr. CHHIM VICHEA, Manager – Accounting & Tax
- +855 89 334 733
- vichea@reachspro.com



THANKS!!!