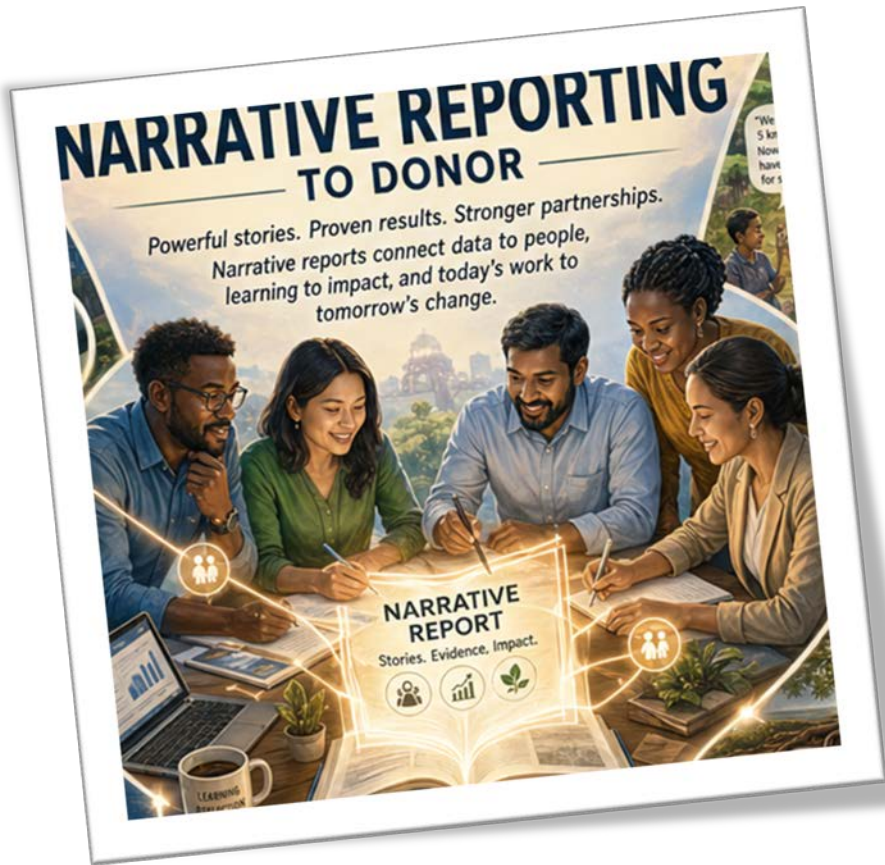


Narrative Donor Reporting

Mr. Khim Narith



1. What are the **key** **benefits** of **Narrative Donor Report** for your **Organization?**

10 BENEFITS OF NARRATIVE REPORTING TO DONOR

1

DEMONSTRATES ACCOUNTABILITY AND TRANSPARENCY

Shows donors how funds were used
and what was achieved.
Builds trust through clear,
honest, human-readable
accounting of results.

FUNDS UTILIZED

- Planning
- Implementation
- Monitoring
- Capacity Building
- Community Activities

TRANSPARENCY

TRUST



10 BENEFITS OF NARRATIVE REPORTING TO DONOR

2

CAPTURES QUALITATIVE CHANGE

Tells the deeper story behind the numbers—voices, experiences, behavior change, community dynamics, and contextual shifts that data tables cannot show.

"We used to walk 5 km for water. Now our children have more time for school."

"I feel more confident to lead in my community."

"We are working together as one community."

"I feel more confident to lead in my community."

"We are working together as one community."

10 BENEFITS OF NARRATIVE REPORTING TO DONOR

3

SUPPORTS ADAPTIVE MANAGEMENT

Documents what worked, what didn't, and why—enabling real-time adjustments, resource reallocation, and strategy pivots.

PLAN

ADAPT

ADJUST



10 BENEFITS OF NARRATIVE REPORTING TO DONOR

4

CREATES INSTITUTIONAL MEMORY

Serves as a living archive of experience—preserving lessons learned, challenges, and success factors for future programs, and proposals.

LESSONS
LEARNED



10 BENEFITS OF NARRATIVE REPORTING TO DONOR

5

ENCOURAGES REFLECTIVE PRACTICE

The reporting process encourages critical reflection, deeper analysis, and meaningful engagement with data—strengthening MEL culture within organizations.

IMPLEMENTER

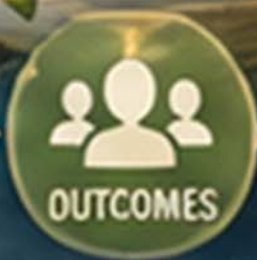


10 BENEFITS OF NARRATIVE REPORTING TO DONOR

6

VALIDATES THEORY OF CHANGE

Tests and articulates whether assumed pathways of change are holding true—connecting activities to impact in a coherent narrative.



10 BENEFITS OF NARRATIVE REPORTING TO DONOR

7

FACILITATES KNOWLEDGE SHARING AND LEARNING

Contributes to the broader evidence base—shared as case studies, learning briefs, and best practices to strengthen the sector.



10 BENEFITS OF NARRATIVE REPORTING TO DONOR

8

SUPPORTS ADVOCACY AND RESOURCE MOBILIZATION

Compelling stories can be repurposed (with consent) to influence policy, inspire action, and attract new resources and funding.



NEW PARTNERS
MORE RESOURCES
GREATER IMPACT



10 BENEFITS OF NARRATIVE REPORTING TO DONOR

9

DONOR **IMPLEMENTER**

10 **MEETS COMPLIANCE AND DUE DILIGENCE REQUIREMENTS**

Fulfills contractual obligations, protects legal and reputational standing, and reduces risk of audit findings or funding clawbacks.

REFLECTION

- ✓ What worked?
- ✓ What didn't?
- ✓ Why?
- ✓ What next?

POLICIES

GUIDELINES

CONTRACTS

AUDIT READY

le change.

1 DEMONSTRATES ACCOUNTABILITY AND TRANSPARENCY

Shows donors how funds were used and what was achieved. Builds trust through clear, honest, human-readable accounting of results.



10 BENEFITS OF NARRATIVE REPORTING TO DONOR

Powerful stories. Proven results. Stronger partnerships. Narrative reports connect data to people, learning to impact, and today's work to tomorrow's change.

2 CAPTURES QUALITATIVE CHANGE

Tells the deeper story behind the numbers—voices, experiences, behavior change, community dynamics, and contextual shifts that data tables cannot show.

"We used to walk 5 km for water. Now our children have more time for school."

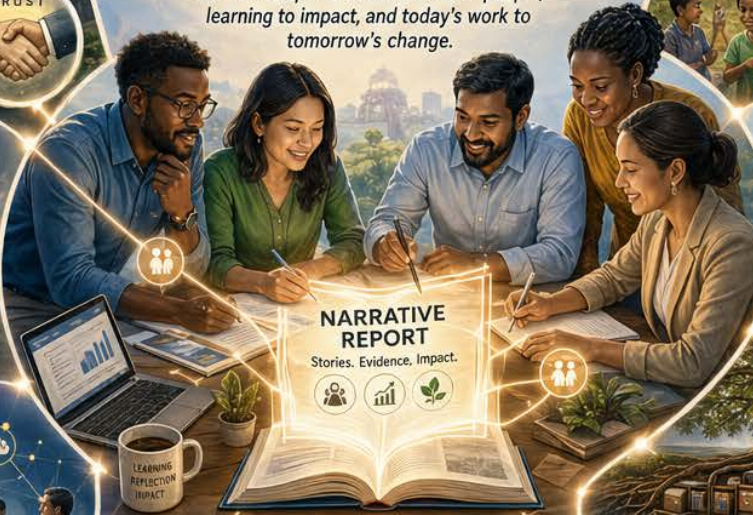
"I feel more confident to lead in my community."

"We are working together as one community."



6 VALIDATES THEORY OF CHANGE

Tests and articulates whether assumed pathways of change are holding true—connecting activities to impact in a coherent narrative.



3 SUPPORTS ADAPTIVE MANAGEMENT

Documents what worked, what didn't, and why—enabling real-time adjustments, resource reallocation, and strategy pivots.



7 FACILITATES KNOWLEDGE SHARING AND LEARNING

Contributes to the broader evidence base—shared as case studies, learning briefs, and best practices to strengthen the sector.



4 CREATES INSTITUTIONAL MEMORY

Serves as a living archive of experience—preserving lessons learned, challenges, and success factors for future programs, and proposals.



8 SUPPORTS ADVOCACY AND RESOURCE MOBILIZATION

Compelling stories can be repurposed (with consent) to influence policy, inspire action, and attract new resources and funding.

NEW PARTNERS
MORE RESOURCES
GREATER IMPACT



9

DONOR

IMPLEMENTER



5 ENCOURAGES REFLECTIVE PRACTICE

The reporting process encourages critical reflection, deeper analysis, and meaningful engagement with data—strengthening MEL culture within organizations.



10 MEETS COMPLIANCE AND DUE DILIGENCE REQUIREMENTS

Fulfills contractual obligations, protects legal and reputational standing, and reduces risk of audit findings or funding clawbacks.

M&E SPECIALIST'S TAKEAWAY

"Narrative reporting is not bureaucracy — it is a strategic tool to demonstrate relevance, effectiveness, efficiency, and impact."



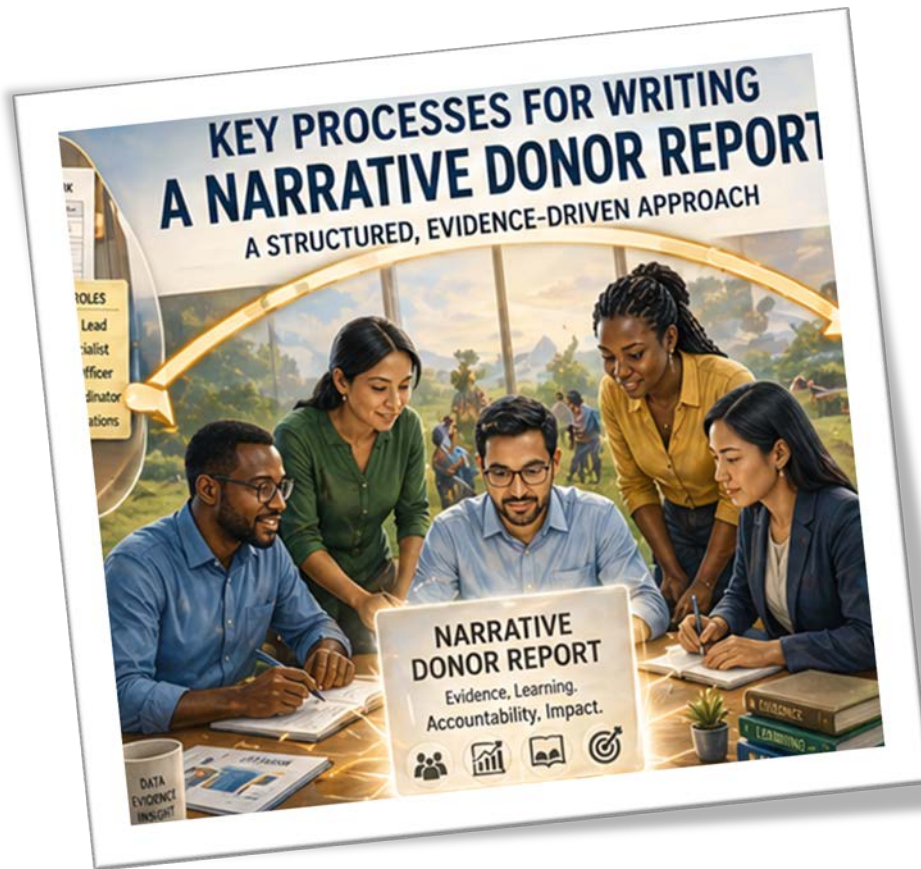
Better reporting. Smarter decisions. Stronger impact. Sustainable change.

BETTER STORIES
BETTER DECISIONS

BETTER WORLD

NARRATIVE REPORTING: CONNECTING PEOPLE, DATA, LEARNING AND IMPACT.

STRONGER PROGRAMS.
STRONGER PARTNERSHIPS.
LASTING CHANGE.



2. What are the **key** **processes** for writing a **Narrative Donor Report**?

KEY PROCESSES FOR WRITING A NARRATIVE DONOR REPORT

A STRUCTURED, EVIDENCE-DRIVEN APPROACH

MM ROLES
Program Lead
MEL Specialist
Finance Officer
Field Coordinator
Communications

**NARRATIVE
DONOR REPORT**
Evidence. Learning.
Accountability. Impact.

DATA
EVIDENCE
INSIGHT

1 PRE-WRITING PREPARATION

- ✓ Review the Donor Agreement and Reporting Requirements
- ✓ Re-read the LogFrame/Results Framework and reporting template
- ✓ Confirm deadlines and formatting expectations
- ✓ Assemble your reporting team and assign roles & responsibilities

TEAM ROLES

- Program Lead
- MEL Specialist
- Finance Officer
- Field Coordinator
- Communications

2 DATA COLLECTION AND VERIFICATION

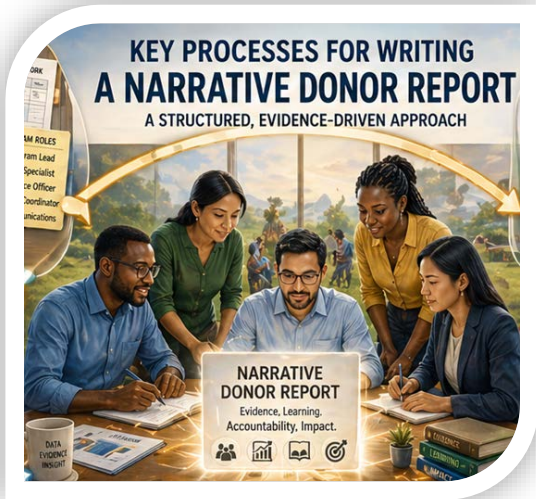
- ✓ Gather quantitative data from MEAL systems, registers, and activity logs
- ✓ Collect qualitative data: FGDs, interviews, field notes, case studies
- ✓ Verify data quality and cross-check with source documents
- ✓ Ensure disaggregation by sex, age, location, etc.
- ✓ Reconcile with financial expenditure reports

DATA COLLECTION
Household Survey

Sex:

Age:

Location:



3 PERFORMANCE ANALYSIS AGAINST TARGETS

- ✓ Compare actuals vs. targets for each indicator
- ✓ Identify met, exceeded, or missed targets
- ✓ Explain variances with evidence and context
- ✓ Analyze outputs, outcomes, and impact using the Theory of Change

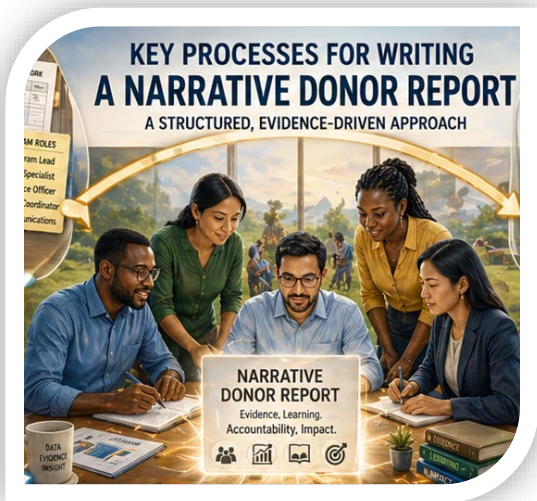
ACTUAL vs TARGET			
Indicator	Target	Actual	Status
# of beneficiaries	5,000	5,300	✓
School attendance (%)	80%	72%	✓
Income increase (%)	20%	18%	✗

Diagram illustrating the Theory of Change process: INPUTS → ACTIVITIES → OUTPUTS → OUTCOMES → IMPACT.

4 STRUCTURING THE REPORT

A strong narrative report includes:

- 1 Executive Summary
- 2 Program Context
- 3 Progress Against Objectives
- 4 Cross-Cutting Themes
- 5 Challenges & Mitigation
- 6 Lessons Learned
- 7 Case Studies / Success Stories
- 8 Financial Summary
- 9 Workplan for Next Period



5 WRITING WITH EVIDENCE AND CLARITY

- Lead with evidence: data, quotes, and documented observations
- Use the donor's language and align with their priorities
- Be specific and avoid vague statements
- Balance achievements with challenges
- Be honest and credible

"Through the livelihood training, my income increased and I can now support my children's education."
 – Beneficiary, Kenya

6 INTERNAL REVIEW AND QUALITY ASSURANCE

- Program review: technical accuracy and completeness
- MEL review: validate data, indicators, and analysis
- Finance review: ensure narrative matches financials
- Senior management sign-off
- Proofread for clarity, grammar, and donor template

	Program Manager	<input checked="" type="checkbox"/>
	MEL Specialist	<input checked="" type="checkbox"/>
	Finance Officer	<input checked="" type="checkbox"/>
	Management	<input checked="" type="checkbox"/>

QUALITY CHECK APPROVED

KEY PROCESSES FOR WRITING A NARRATIVE DONOR REPORT

A STRUCTURED, EVIDENCE-DRIVEN APPROACH

NARRATIVE DONOR REPORT
Evidence. Learning. Accountability. Impact.

MM ROLES
from Lead Specialist
to Officer
Coordinator
to Communications

DATA EVIDENCE INSIGHT

7 SUBMISSION AND FOLLOW-UP

- ✓ Submit on or before the deadline
- ✓ Retain a copy for institutional memory
- ✓ Follow up with the donor on any questions
- ✓ Request feedback to improve future reports

8 POST-SUBMISSION LEARNING

- ✓ Debrief with the reporting team
- ✓ Identify data gaps and challenges
- ✓ Update MEAL plan and improve systems
- ✓ Document lessons learned and best practices
- ✓ Strengthen institutional knowledge

KEY PROCESSES FOR WRITING A NARRATIVE DONOR REPORT

A STRUCTURED, EVIDENCE-DRIVEN APPROACH

1 PRE-WRITING PREPARATION

- Review the Donor Agreement and Reporting Requirements
- Re-read the LogFrame/Results Framework and reporting template
- Confirm deadlines and formatting expectations
- Assemble your reporting team and assign roles & responsibilities



TEAM ROLES
 Program Lead
 MEL Specialist
 Finance Officer
 Field Coordinator
 Communications

2 DATA COLLECTION AND VERIFICATION

- Gather quantitative data from MEAL systems, registers, and activity logs
- Collect qualitative data: FGDs, interviews, field notes, case studies
- Verify data quality and cross-check with source documents
- Ensure disaggregation by sex, age, location, etc.
- Reconcile with financial expenditure reports



3 POST-SUBMISSION LEARNING

- Debrief with the reporting team
- Identify data gaps and challenges
- Update MEAL plan and improve systems
- Document lessons learned and best practices
- Strengthen institutional knowledge



LESSONS LEARNED

What worked? Challenges

What we'll do better

NARRATIVE DONOR REPORT

Evidence. Learning. Accountability. Impact.



3 PERFORMANCE ANALYSIS AGAINST TARGETS

- Compare actuals vs. targets for each indicator
- Identify met, exceeded, or missed targets
- Explain variances with evidence and context
- Analyze outputs, outcomes, and impact using the Theory of Change

ACTUAL vs TARGET			
Indicator	Target	Actual	Status
# of beneficiaries	5,000	5,300	✓
School attendance (%)	80%	72%	✓
Income increase (%)	20%	18%	✗



7 SUBMISSION AND FOLLOW-UP

- Submit on or before the deadline
- Retain a copy for institutional memory
- Follow up with the donor on any questions
- Request feedback to improve future reports



6 INTERNAL REVIEW AND QUALITY ASSURANCE

- Program review: technical accuracy and completeness
- MEL review: validate data, indicators, and analysis
- Finance review: ensure narrative matches financials
- Senior management sign-off
- Proofread for clarity, grammar, and donor template

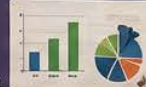
Program Manager	✓
MEL Specialist	✓
Finance Officer	✓
Management	✓

QUALITY CHECK APPROVED

5 WRITING WITH EVIDENCE AND CLARITY

- Lead with evidence: data, quotes, and documented observations
- Use the donor's language and align with their priorities
- Be specific and avoid vague statements
- Balance achievements with challenges
- Be honest and credible

"Through the livelihood training, my income increased and I can now support my children's education."
 — Beneficiary, Kenya



4 STRUCTURING THE REPORT

A strong narrative report includes:

- Executive Summary
- Program Context
- Progress Against Objectives
- Cross-Cutting Themes
- Challenges & Mitigation
- Lessons Learned
- Case Studies / Success Stories
- Financial Summary
- Workplan for Next Period



THE RESULT

High-quality narrative reports build trust, demonstrate impact, inform decisions, and strengthen partnerships for greater development outcomes.



M&E SPECIALIST'S GOLDEN RULE

A GREAT NARRATIVE REPORT IS NOT WRITTEN AT THE END – IT IS BUILT CONTINUOUSLY THROUGH DATA COLLECTION, DOCUMENTATION, AND REFLECTION THROUGHOUT THE PROJECT CYCLE.





3. What sorts of **DATA** do you need for writing a **Narrative Donor Report?**

DATA REQUIREMENTS FOR WRITING A NARRATIVE DONOR REPORT

Strong narrative reports are built on credible, relevant, and well-documented data.



DATA REQUIREMENTS FOR WRITING A NARRATIVE DONOR REPORT

Strong narrative reports are built on credible, relevant, and well-documented data.



QUALITATIVE DATA



FGD records



Key informant interviews



Case studies & success stories



Field visit & observation notes



Beneficiary feedback & complaints data



FOCUS GROUP DISCUSSION



KEY INFORMANT INTERVIEW



CASE STUDY



FIELD VISIT & OBSERVATIONS



FEEDBACK & COMPLAINTS

DATA REQUIREMENTS FOR WRITING A NARRATIVE DONOR REPORT

Strong narrative reports are built on credible, relevant, and well-documented data.



PROGRAM MANAGEMENT DATA



Workplan & activity tracking data

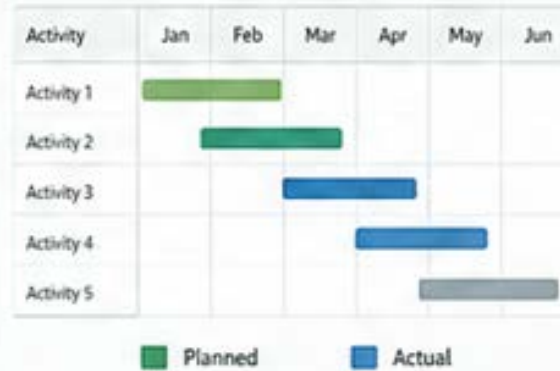


Partner performance data



Risk & issue logs

WORKPLAN VS ACTUAL



PARTNER PERFORMANCE

Partner	Rating
Partner A	★★★★
Partner B	★★★☆☆
Partner C	★★☆☆☆

RISK & ISSUE LOG



Risk Identified

Mitigation Action



DATA REQUIREMENTS FOR WRITING A NARRATIVE DONOR REPORT

Strong narrative reports are built on credible, relevant, and well-documented data.



FINANCIAL DATA



Budget vs. actual expenditure



Variance analysis

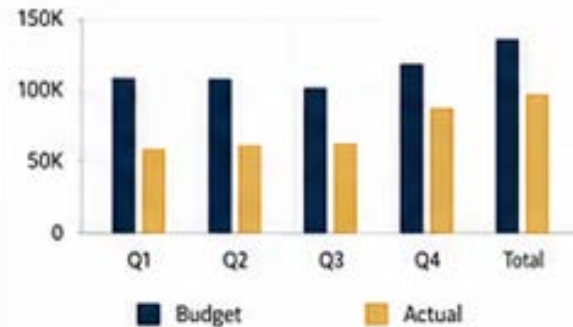


Cost per beneficiary / cost-effectiveness

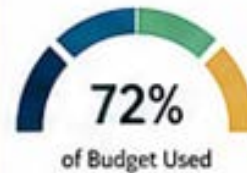


Procurement & asset records

BUDGET VS. ACTUAL (USD)



BURN RATE



COST PER BENEFICIARY

\$48.6
Total Cost / Total Beneficiaries

PROCUREMENT & ASSETS



Procurement
Records



Asset
Register

DATA REQUIREMENTS FOR WRITING A NARRATIVE DONOR REPORT

Strong narrative reports are built on credible, relevant, and well-documented data.



DATA REQUIREMENTS FOR WRITING A NARRATIVE DONOR REPORT

Strong narrative reports are built on credible, relevant, and well-documented data.

QUANTITATIVE DATA

- Indicator performance data
- Beneficiary reach data
- Activity & output tracking data
- Survey & assessment data
- Disaggregated data



QUALITATIVE DATA

- FGD records
- Key informant interviews
- Case studies & success stories
- Field visit & observation notes
- Beneficiary feedback & complaints data



PROGRAM MANAGEMENT DATA

- Workplan & activity tracking data
- Partner performance data
- Risk & issue logs



PARTNER PERFORMANCE

Partner	Rating
Partner A	★★★★
Partner B	★★★★☆
Partner C	★★★☆☆

RISK & ISSUE LOG

! Risk Identified

Mitigation Action

✓

FINANCIAL DATA

- Budget vs. actual expenditure
- Variance analysis
- Cost per beneficiary / cost-effectiveness
- Procurement & asset records



- PROCUREMENT & ASSETS
- Procurement Records
 - Asset Register

CONTEXTUAL & SECONDARY DATA

- Situation & context analysis data
- Government & sector data
- Coordination & mapping data



GOVERNMENT & SECTOR DATA



COORDINATION & MAPPING



KEY REMINDER

Quality data → Credible evidence → Compelling narrative → Greater impact



**4. What would be
the consequences
of late submission
of a **Narrative
Donor Report?****

CONSEQUENCES OF LATE SUBMISSION OF A **DONOR NARRATIVE REPORT**

Late reporting triggers serious risks across your organization, your programs, and your future.

2

FINANCIAL CONSEQUENCES



Disbursement
delays



Budget
disruptions



Withholding
of funds



Clawback
of funds



Ineligibility of
expenditures

CONSEQUENCES OF LATE SUBMISSION OF A DONOR NARRATIVE REPORT

Late reporting triggers serious risks across your organization, your programs, and your future.

3 LEGAL & COMPLIANCE CONSEQUENCES



Breach of contract



Audit findings



Suspension of activities



Termination of the grant



Debarment from future funding

4 REPUTATIONAL & FUTURE FUNDING CONSEQUENCES

REPUTATIONAL IMPACT



Damaged credibility



Negative references



Loss of preferred partner status



Public accountability risks

FUTURE FUNDING IMPACT



Exclusion from renewal



Reduced funding allocation



Ineligibility for competitive grants



Loss of no-cost extension opportunities

CONSEQUENCES OF LATE SUBMISSION OF A DONOR NARRATIVE REPORT

Late reporting triggers serious risks across your organization, your programs, and your future.

5

OPERATIONAL & INTERNAL ORGANIZATIONAL CONSEQUENCES



OPERATIONAL IMPACT



Disruption to program delivery



Data quality deterioration



Loss of institutional memory



Partner cascade effect

INTERNAL IMPACT



Staff morale & burnout



Leadership accountability



Weakened MEAL systems

CONSEQUENCES OF LATE SUBMISSION OF A DONOR NARRATIVE REPORT

Late reporting triggers serious risks across your organization, your programs, and your future.

1 DAMAGE TO DONOR RELATIONSHIPS



- Erosion of trust
- Strained communication
- Reduced goodwill
- Increased scrutiny

2 FINANCIAL CONSEQUENCES

- Disbursement delays
- Budget disruptions
- Withholding of funds
- Clawback of funds
- Ineligibility of expenditures

3 LEGAL & COMPLIANCE CONSEQUENCES

- Breach of contract
- Audit findings
- Suspension of activities
- Termination of the grant
- Debarment from future funding

4 REPUTATIONAL & FUTURE FUNDING CONSEQUENCES

REPUTATIONAL IMPACT

- Damaged credibility
- Negative references
- Loss of preferred partner status
- Public accountability risks

FUTURE FUNDING IMPACT

- Exclusion from renewal
- Reduced funding allocation
- Ineligibility for competitive grants
- Loss of no-cost extension opportunities

5 OPERATIONAL & INTERNAL ORGANIZATIONAL CONSEQUENCES

OPERATIONAL IMPACT

- Disruption to program delivery
- Data quality deterioration
- Loss of institutional memory
- Partner cascade effect

INTERNAL IMPACT

- Staff morale & burnout
- Leadership accountability
- Weakened MEAL systems



PREVENT LATE REPORTING WITH STRONG SYSTEMS & PROACTIVE COMMUNICATION

Internal reporting calendar
Align team deadlines well ahead

Dedicated reporting coordinator
Assign clear ownership of the process

Routine data collection systems
Continuously gather quality evidence

Donor communication protocols
Proactively inform of anticipated delays

Report quality checklists
Reduce revision cycles

Senior management accountability
Embed compliance in performance management

M&E SPECIALIST'S BOTTOM LINE

If a delay is unavoidable, proactive communication is non-negotiable.

- Notify the donor immediately
- Explain the reason honestly
- Provide a revised submission date

Donors are far more forgiving of an organization that communicates transparently than one that goes silent and submits without explanation.

LATE REPORTING IS MANAGEABLE – SILENCE IS NOT.