

KINGDOM OF CAMBODIA

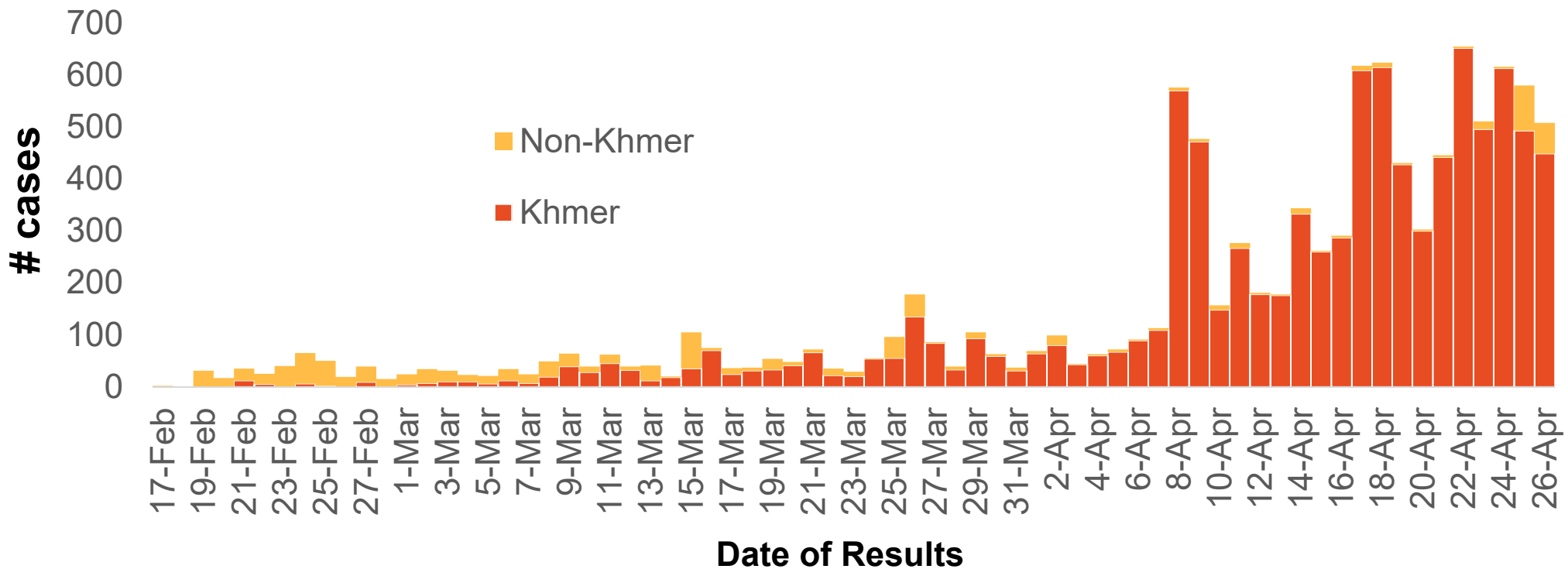


MINISTRY OF HEALTH

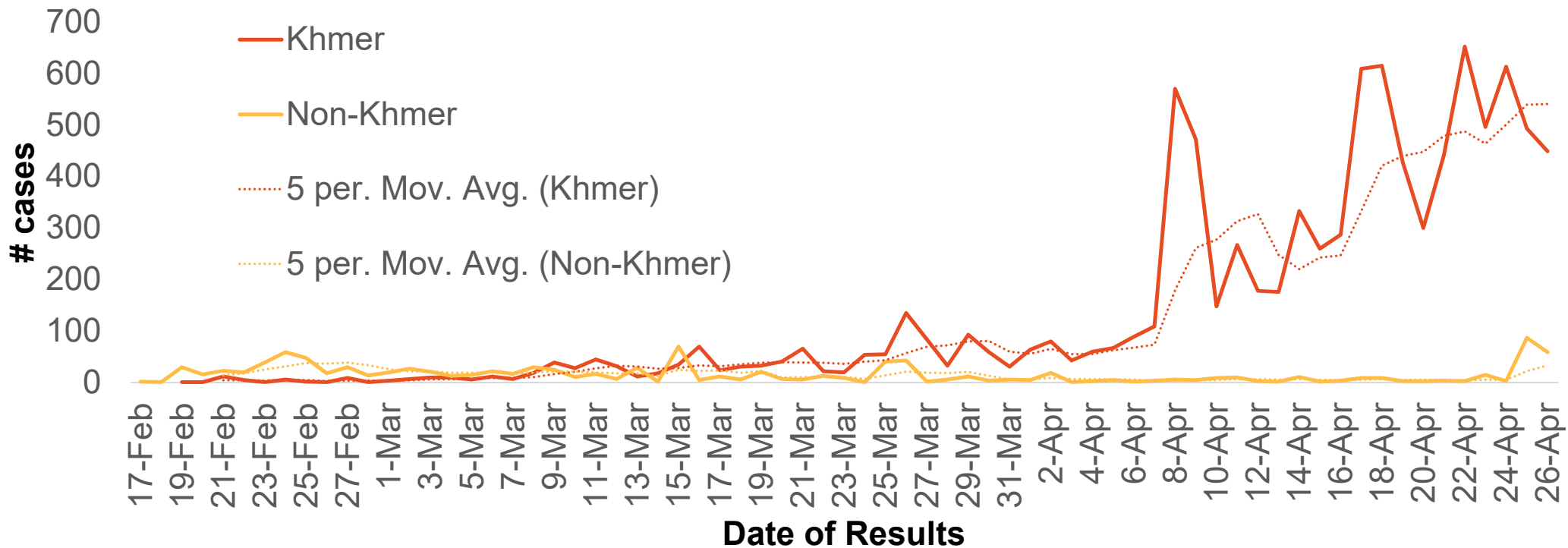
Cambodia COVID-19 Situation Update

28 April 2021

Cases by date of results stratified by nationalities

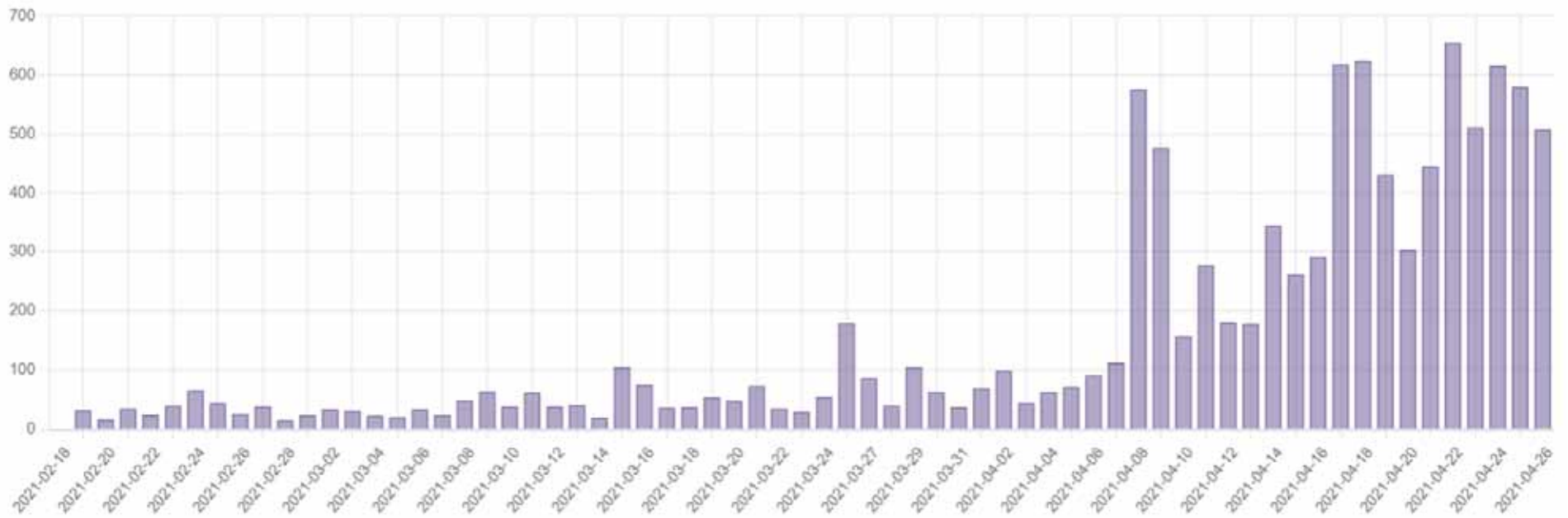


Cases by date of results stratified by nationalities

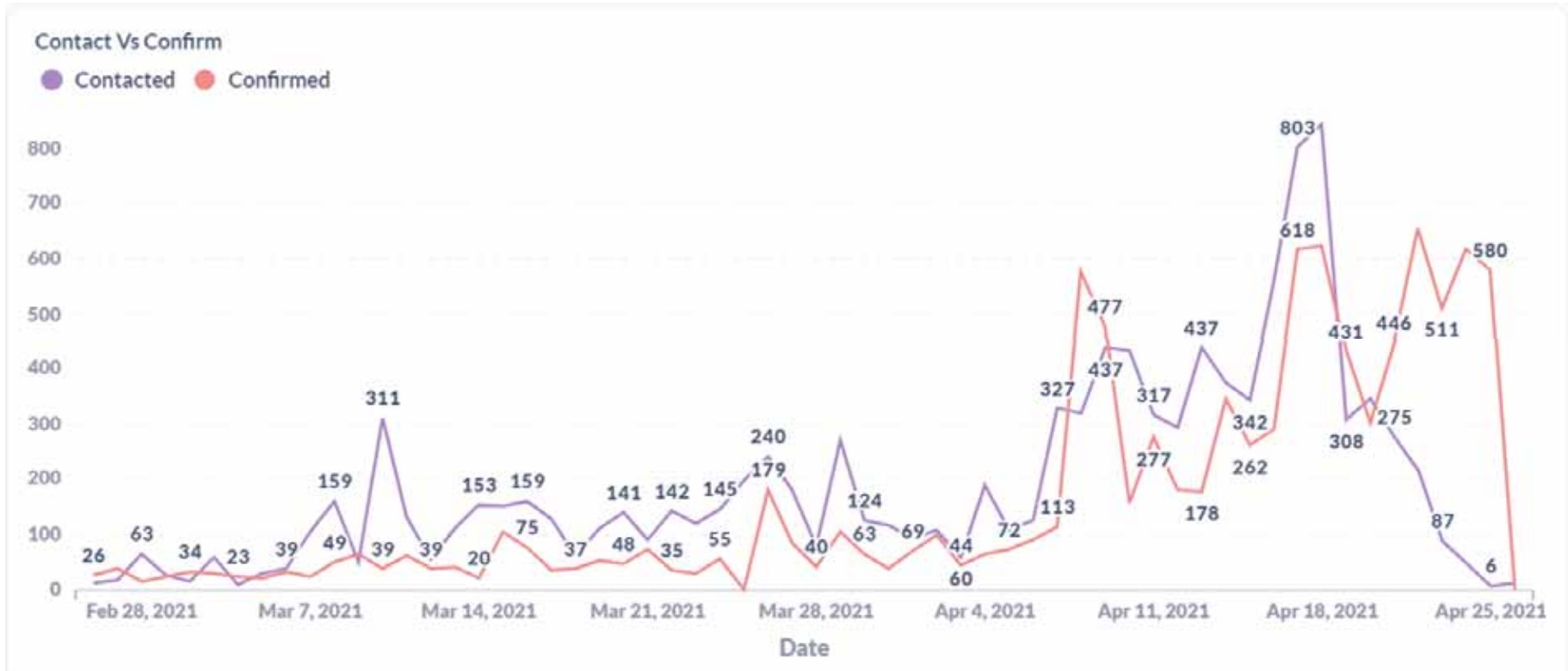


Daily case

Daily Cases

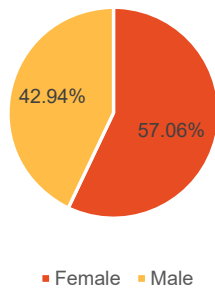


Contact Vs Confirmed Case

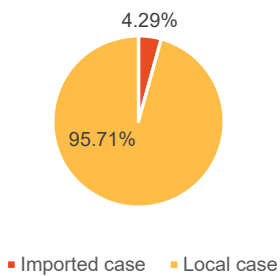


Cases by gender, age group, nationalities, transmission type

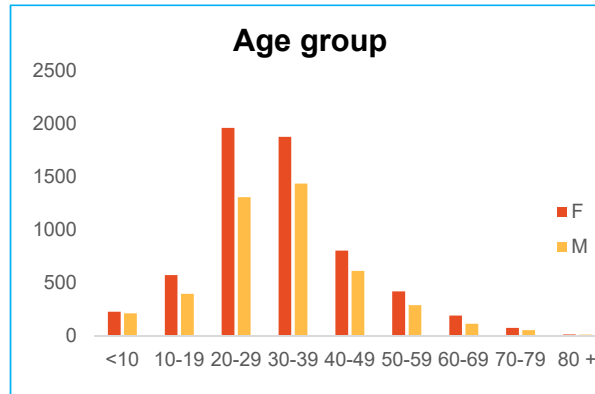
Gender



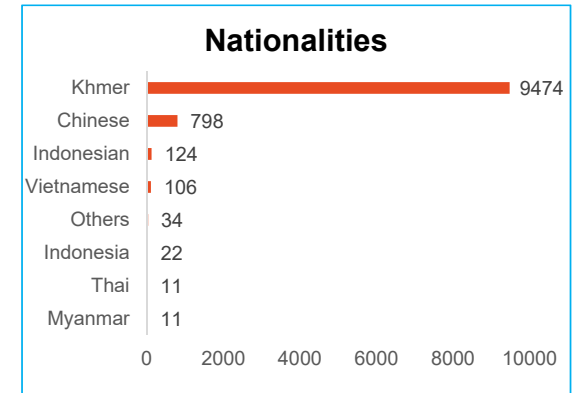
Transmission type



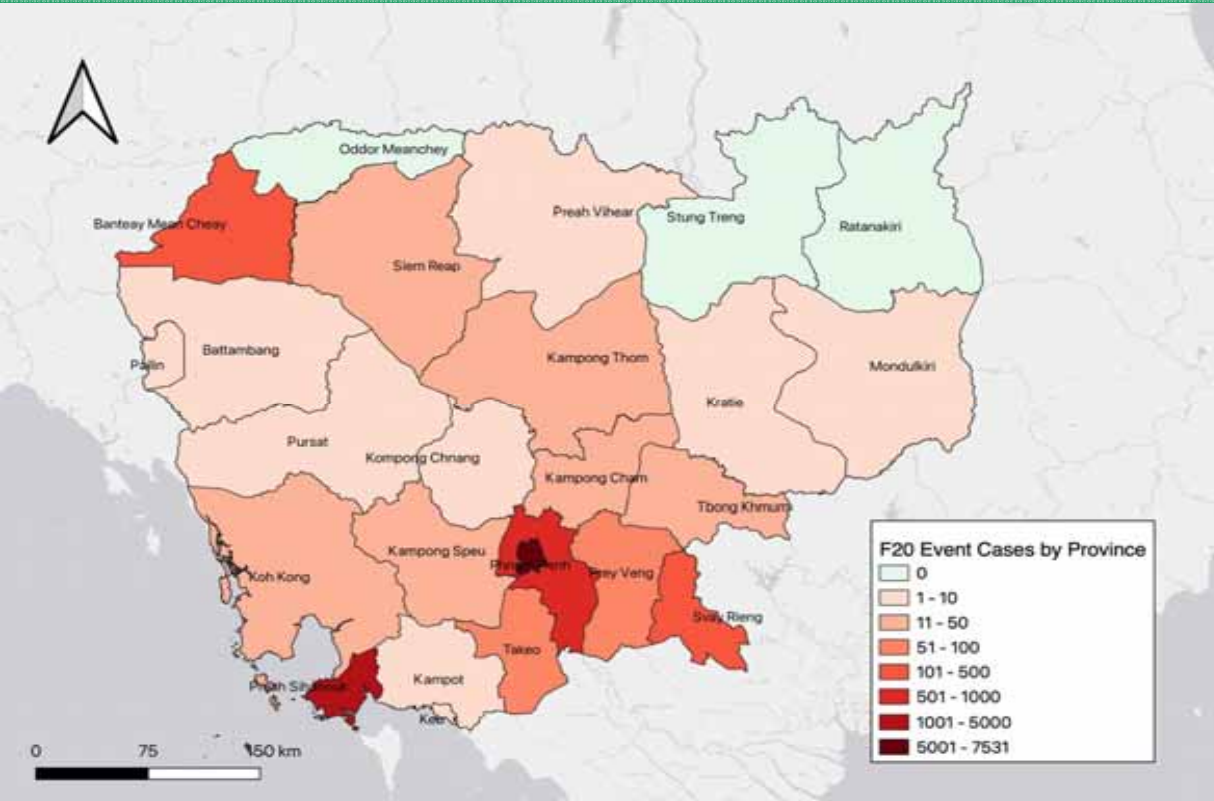
Age group



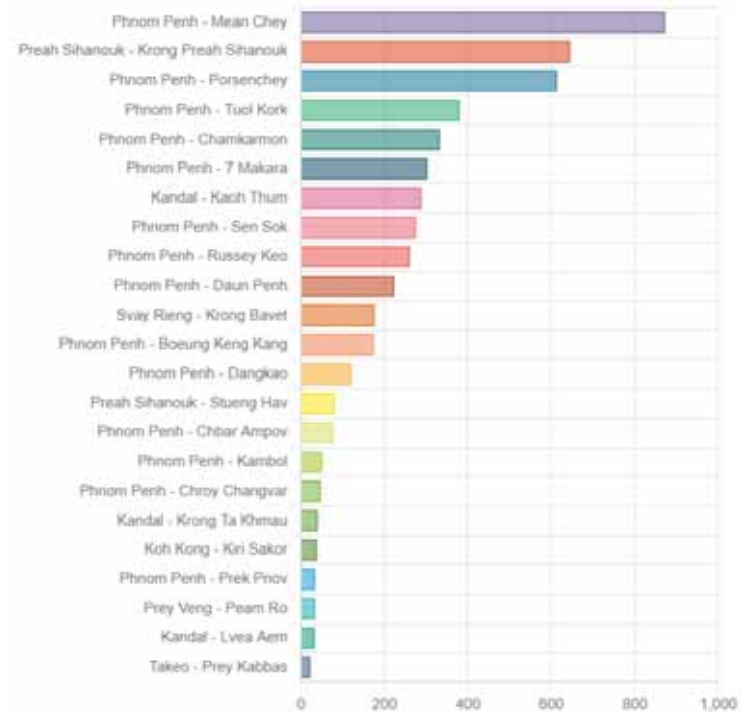
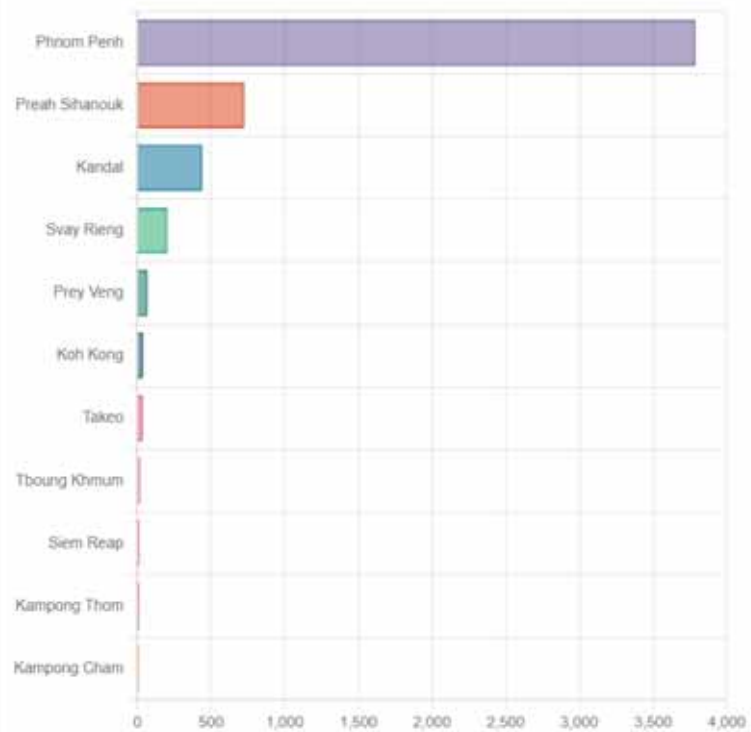
Nationalities



Cases by provinces



Provinces with 10 cases up Vs districts with 20 cases up



BMC shows that no province is safe

Province	Cases Past 14 Days	
Banteay Meanchey	170	
Battambang	1	
Kampong Cham	17	
Kampong Chhnang	8	
Kampong Speu	10	
Kampong Thom	8	
Kampot	3	
Kandal	281	
Kep	4	
Koh Kong	7	
Kratie	2	
Monduliri	1	
Pailin	0	
Phnom Penh	4698	
Preah Sihanouk	905	
Preah Vihear	0	
Prey Veng	22	
Pursat	2	
Siem Reap	4	
Svay Rieng	100	
Takeo	63	
Tbong Khmum	6	
Total	6023	

Banteay Meanchey:

- Online gambling and casinos in Poipet
- 166 cases reported over two days:
 - 73% Indonesian (artefact?)

Kandal:

- Cases detected by rapid tests in every district
- Wholesale market in Takmao city
- Expect cases in Angsnoul, many factory workers

Phnom Penh

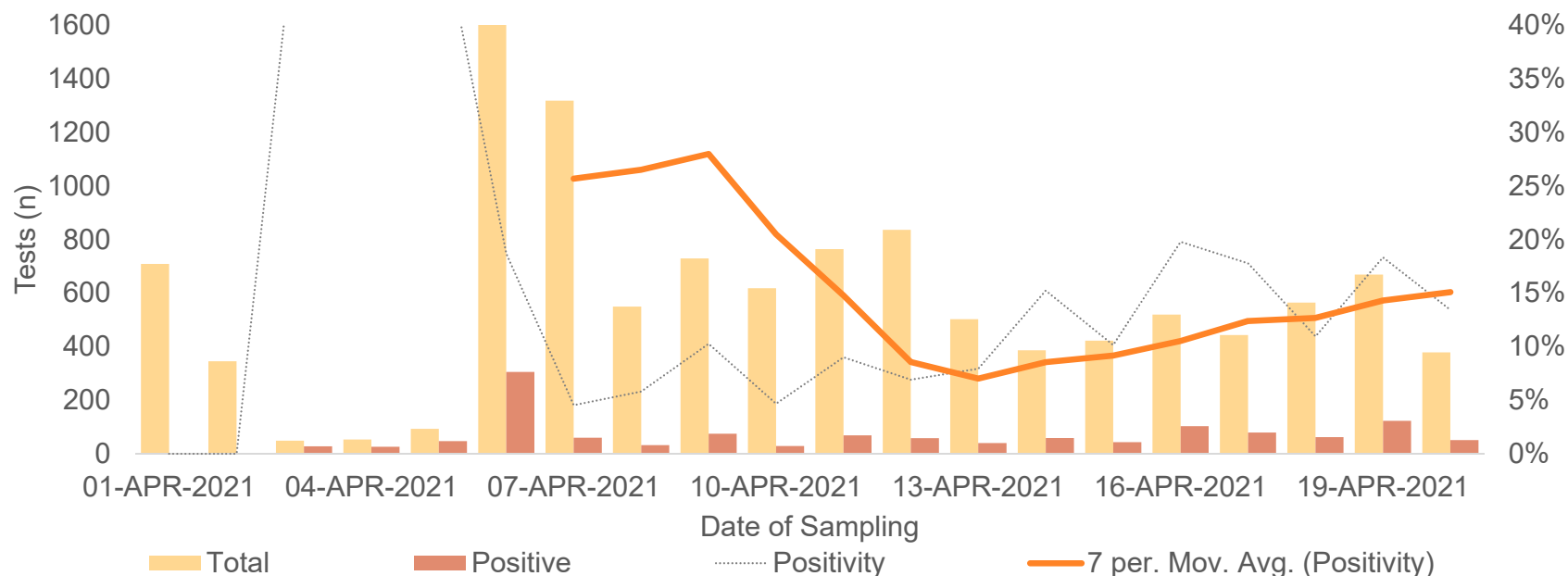
- Community testing in red zones
- Market testing

Preah Sihanouk

- Markets

Test positivity has increased in Phnom Penh over the past 10 days*

SARS-CoV-2 PCR Tests, Positive Tests, and Positivity (IPC) by Date of Sampling, Phnom Penh, 1 - 20 April (N=11598)



*No information on daily tests from NIPH

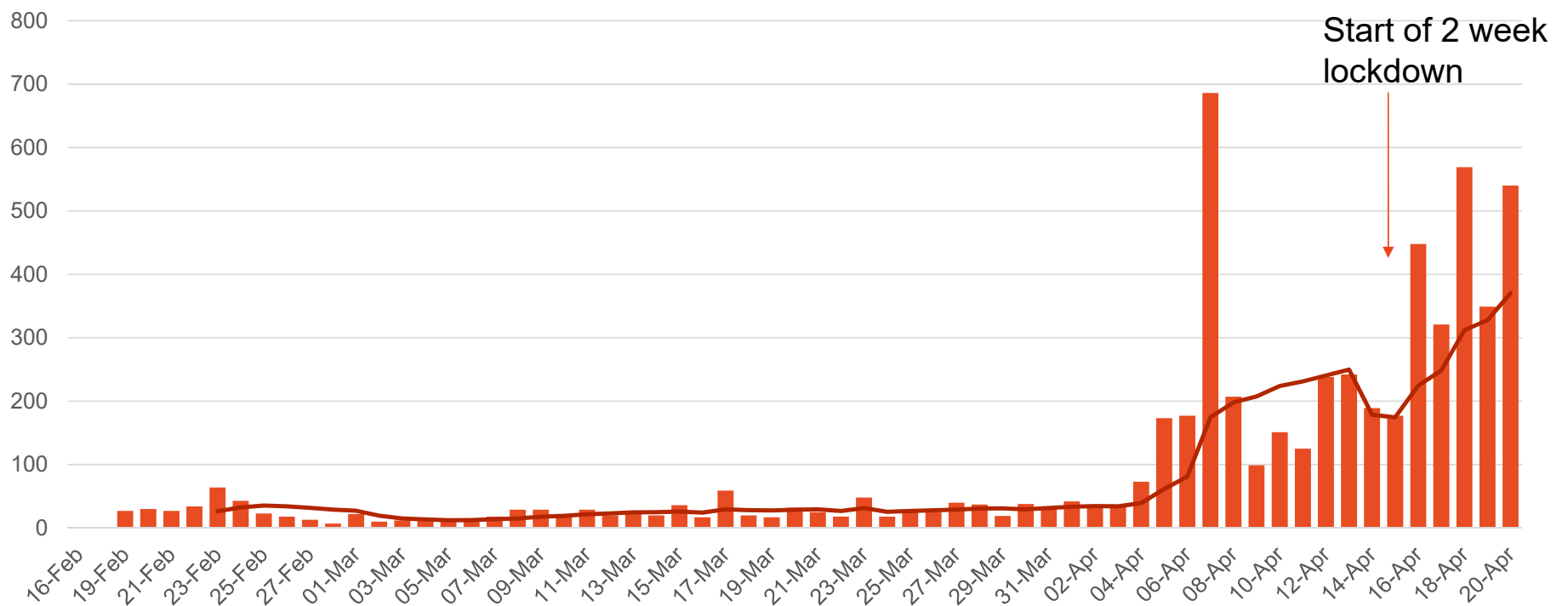


In Phnom Penh, evidence suggests infections have not declined

1. Available testing and ILI data indicate that infections have continued to increase
2. Fatal cases imply there is likely more transmission than has been detected
3. Critical care capacity will be overwhelmed with continued increases in infections
4. Mobility data show that social mixing has reduced, which may lead to reduced infections if continued



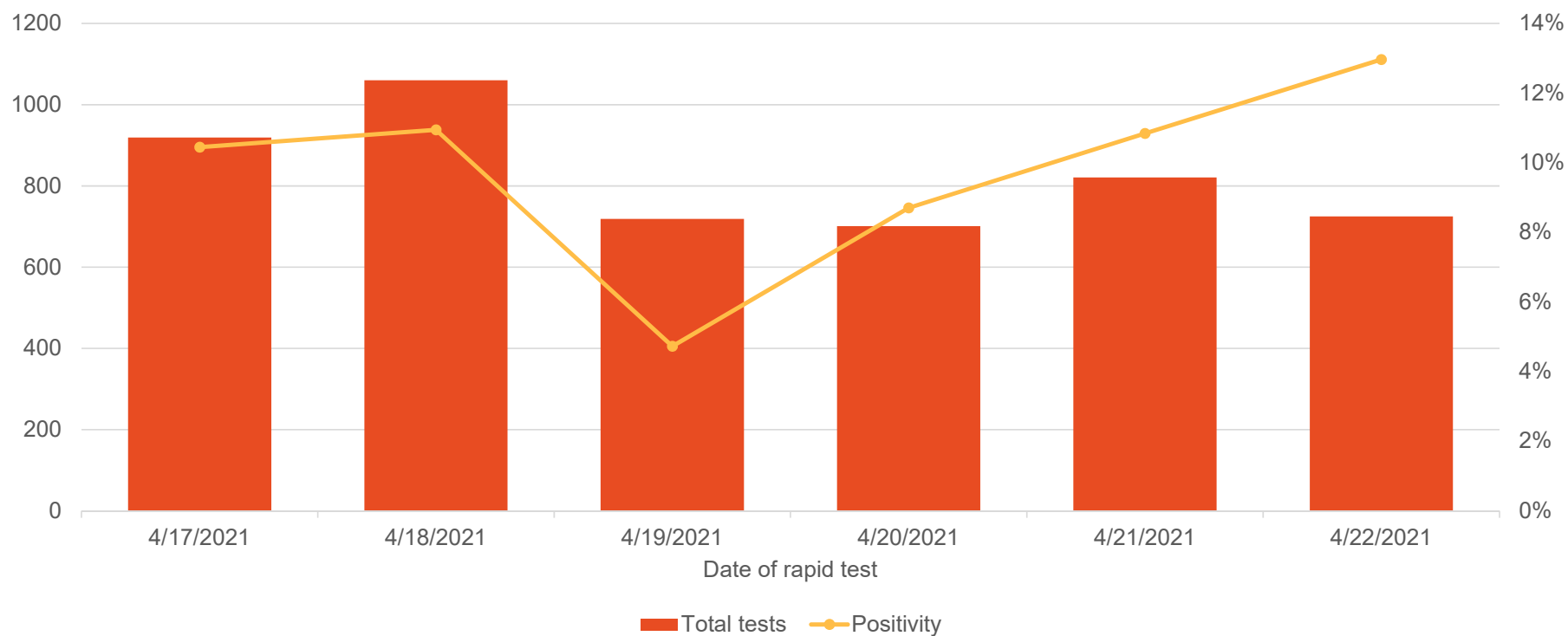
Increasing trend in cases due to outbreaks among factory workers and market vendors in Phnom Penh



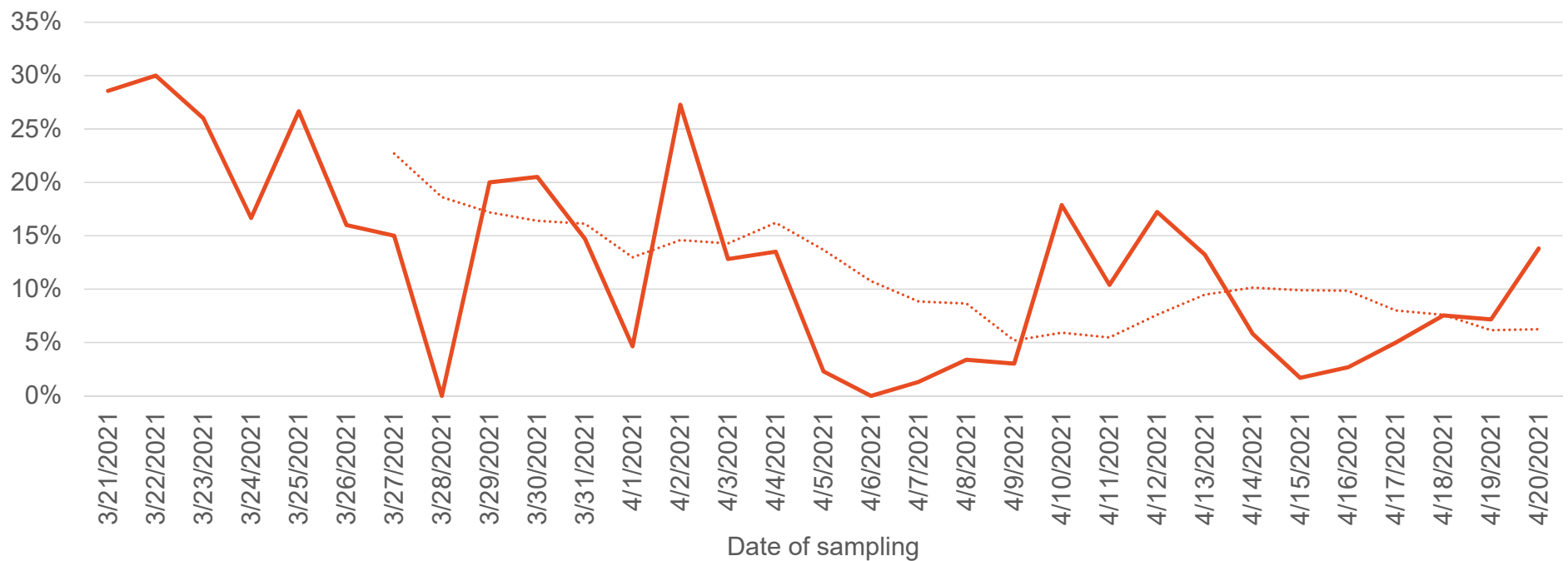
— 7 per. Mov. Avg. (Series1)



Testing of market vendors and factory workers detected high test positivity at two community testing sites, Phnom Penh



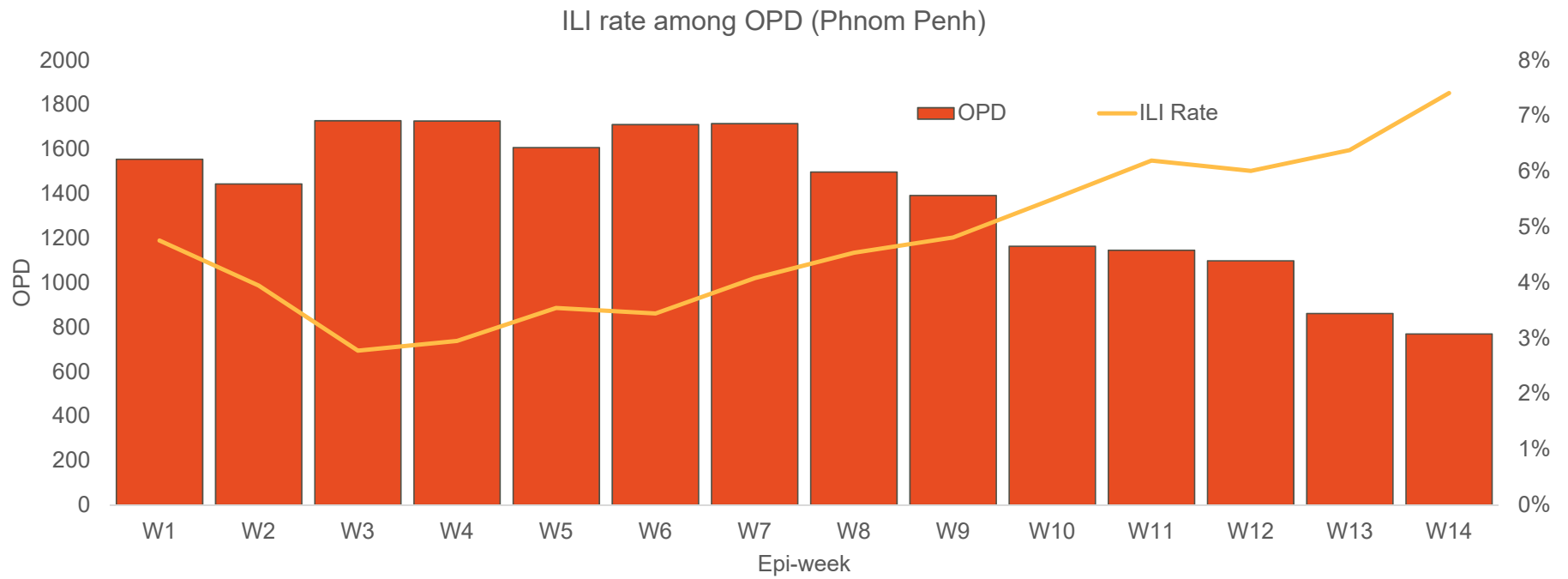
Cases mostly identified at first test and not during quarantine indicates infection continues in the community (Phnom Penh)



Percentage positive on second or subsequent test
7 per. Mov. Avg. (Percentage positive on second or subsequent test)



Increasing ILI consultations as a proportion of declining OPD visits suggest continuing infections



Bed occupancy in Phnom Penh

Health Care Facilities in Phnom Penh	Care Pathways	# of beds	# of active cases	BOR
Hospitals				
KSFH	Severe/critical	58	20	34%
CNAT	Mild case/severe/critical	87	40	46%
National Pediatric Hospitals	Mild case/severe/critical	29	1	3%
Luong Mere Hospital	Mild case/severe/critical	500	148	30%
Chak Angre	Mild case	100	48	48%
Immediate repurposing HCFs				
Diamond Island	Mild case	2700	1660	61%
Great Duke	Mild case	500	163	33%
Modern II center	Mild case	250	89	36%
New World Sen Sok	Mild case	800	0	0%
The Premier Sen Sok	Mild case	1500	0	0%
Chea Sim High School	Mild case	260	58	22%
Porchentong High School	Mild case	160	31	19%
Home care	Mild case	na	15	na
Waiting for HCF	Mild case		2845	
Total		6944	5118	74%



Bed occupancy in the provinces

Provinces	HCF Name	Care Pathways	# of beds:	# of active cases	BOR
Kandal	Cheychnash_PH	Mild/severe/critical	190	179	94%
	Kho Thom Treatment Center (repurposing)	Mild case	250	82	33%
Preah Sihanouk	Preah Sihanouk_PH	Mild/severe/critical	150	143	95%
	Sakmaithmey Hotel (repurposing)	Mild case	1000	611	61%
Svayrieng	Bavet Treatment Center (repurposing)	Mild case	150	85	57%
	Svay Chrum district hospital	Mild/severe/critical	150	79	53%
	Samaki Romduol district hospital	Mild case	40	9	23%
Prey Veng	Prey Veng_PH	Mild/severe/critical	60	26	43%
Koh Kong	Koh Kong_PH	Mild/severe/critical	20	9	45%
Siem Reap	Siem Reap_PH	Mild/severe/critical	25	12	48%
Takeo	Takeo Prov_PH	Mild/severe/critical	250	69	28%
Kampot	Kampot_PH	Mild/severe/critical	15	5	33%
Pursat	Pursat_PH	Mild/severe/critical	10	6	60%
Kampong Cham	Kampong Cham_PH	Mild/severe/critical	280	19	7%
Kratie	Kratie_PH	Mild/severe/critical	8	2	25%
Kampong Chhnang	Kampong Chhnang	Mild/severe/critical	20	6	30%
Tbong Khmum	Memut district hospital	Mild case	20	6	30%
Preah Vihear	Preah Vihear_PH	Mild/severe/critical	9	1	11%
Battambang	Battambang_PH	Mild/severe/critical	16	2	13%
Banteay Meanchey	Banteay Meanchey	Mild/severe/critical	17	6	35%
Kampong Thom	Baray and Santuk_district hospital	Mild case	10	6	60%
Kampong Speu	Kampong Speu_PH	Mild/severe/critical	10	8	80%
Mundulkiri	Mundulkiri_PH	Mild/severe/critical	43	3	7%
Kep	Kep_PH	Mild case	6	3	50%
Pailin	Pailin_PH	Mild case	6	1	17%
Total			2755	1378	50%

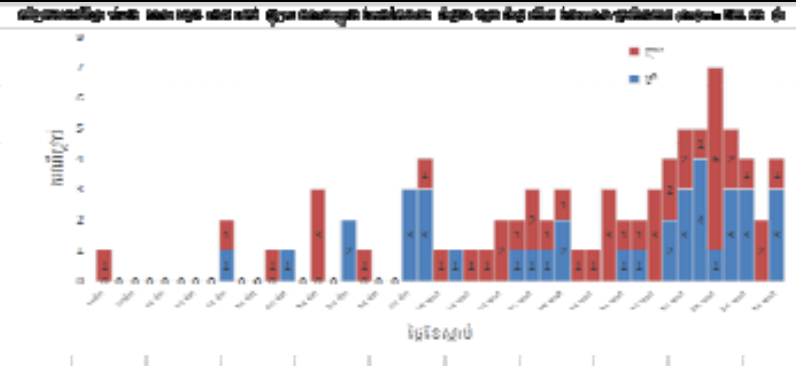


All of Cambodia's 82 reported deaths occurred this year

- **Age range: 24-86**
(median: 57)
- **Confirm (+) after death: 15/82 (18 %)**
- **Died on arrival: 14/82 (17%)**
- **23(~31%) reported at least one underlying condition**

ចំនួនករណីស្លាប់ដោយសារកូវីដ១៩ នៅក្នុងប្រទេសកម្ពុជា តែមួយគត់ តាមជំងឺ ក្រោយពីបានធ្វើតេស្តវិជ្ជមាន នៃមេរោគ កូវីដ១៩ (សរុប-៨២ ករណី)

ល.រ	ជំងឺ	ករណី		សរុប (ករណី)
		ប្រើ	ប្រយុទ្ធ	
១	ខ្លួន	៣៧	៤១	៧៨
២	ចិន	០	២	២
៣	កូវីដ	០	១	១
៤	បារាំង	០	១	១
សរុប		៣៧	៤៥	៨២



Existing surveillance systems to monitor the situation

- **EBS:**
 - Report of contact travelling to avoid quarantine through media monitoring
 - No reports or signals through 115 or media of large events missed
- **ILI & SARI sentinel surveillance and pneumonia surveillance*:**
 - No increases detected in Phnom Penh
 - Cases picked up through SARI (2) and pneumonia (1) surveillance in other provinces in last 2 days
- **Exit certificate screening:** 5 cases detected in the last week
- **Exported cases:** 3 case to China and 2 to Vietnam in the last week
- **Limited asymptomatic screening:** PoE and exit screening, HCW



*N.B. Limitations with sensitivity of sentinel surveillance and limited specimens collected through ILI, SARI and pneumonia surveillance for COVID-19 testing

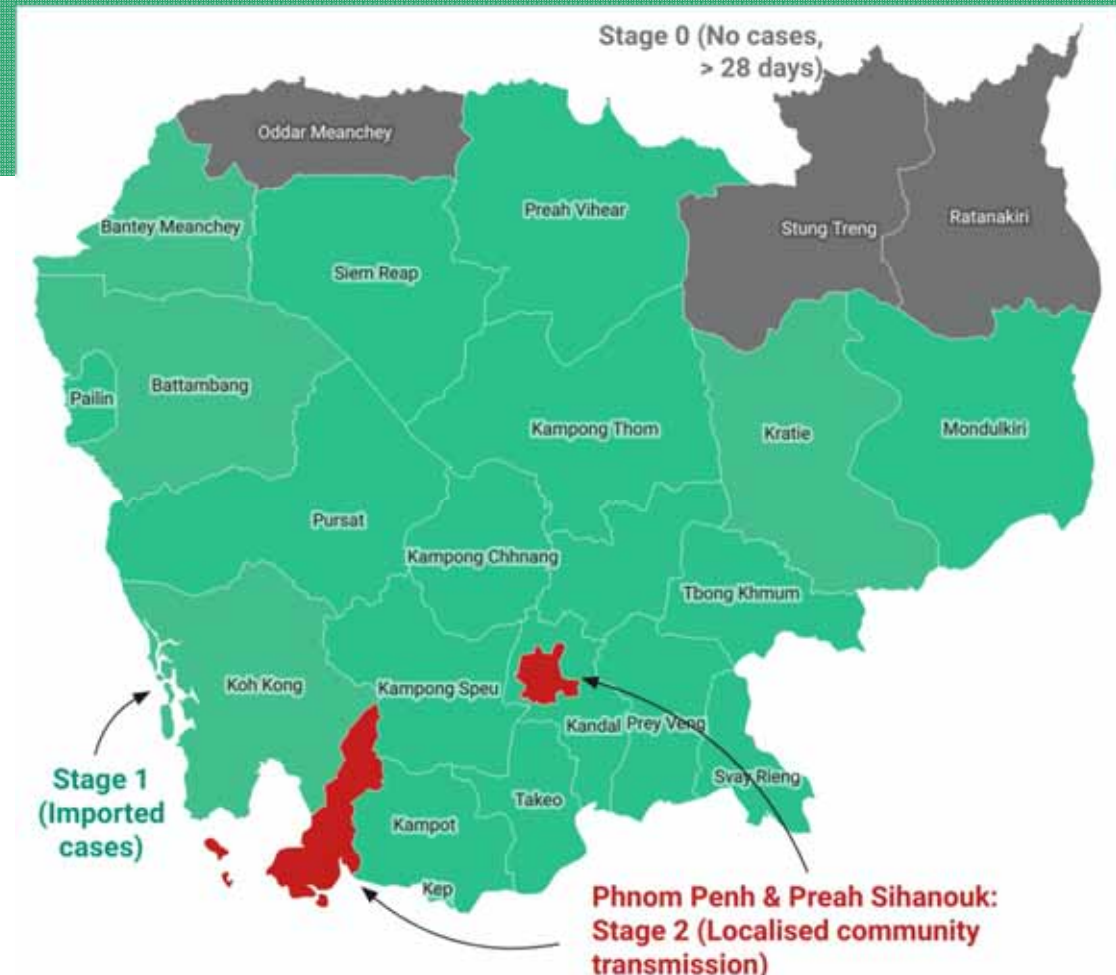
Assessment

Phnom Penh and Preah Sihanouk: Stage 2 transmission (localized community transmission)

- Increases in cases and positivity
- Changes in population demographics and transmission settings

- **Other provinces with cases (n=20)** remain in **stage 1** with no clear evidence of Stage 2 transmission

- **Provinces with no cases** remain in stage 0



Healthcare response and care pathway

	Hospitals	Repurposed facilities	Health workers	COVID-19 staff	Isolation beds (ICU beds)
Phnom Penh	5	2 (1,000 beds)	1,657* (449 MD; 1,087 nurses)	Data to be confirmed	1,385 (34)
Provinces	118 (25 provincial)	5 (4 provinces)	8,500 (1,563 MD; 3,051 nurses)	3,435	1,160 (98)
Total	123	7	10,157 (2,012 MD; 4,138 nurses)		2,545 (132)

*designated national hospitals + 25 provincial/district hospital

Guidance/Policy

- National Protocol on Clinical Management for COVID-19 (draft v3)
- IPC SOP
- Guide/SOP for Private Sectors
- Dead body management



Oxygen consumption (40 lt cylinders)	20611
Functional PSA Plant	1
Number of functional concentrators	45
New concentrators procured and supplied to MOH	300
Functional Ventilators	176
New Ventilators procured and supplied	174



Goals of Response of Royal Government of Cambodia

Three priority areas for action

1. Suppress the cluster

- **Identify 3C settings and identify new clusters for prioritized investigation**, testing, contact tracing, and public messaging
- Employ **targeted non-pharmaceutical interventions**
- **Activate surge capacity** for government-designated quarantine for high-risk contacts and surge capacity for isolation and treatment of patients and care pathways

2. Increase vigilance beyond the cluster

- **Increase detection of new clusters by strictly implementing case definitions, issuing alerts to all HCF, and engaging groups prioritized by Samdech Techo Prime Minister to encourage testing, if symptomatic**
- Raise the risk perception among all communities, **using multiple languages**, to encourage risk-reducing behaviors—**3 Dos and 3 Don'ts**

3. Speed up readiness for Large-Scale Community Transmission

- **Focus on ensuring local readiness measures are in place in all provinces**
- Strengthen capacity for the management of severe cases and critical care
- **Expand laboratory testing capacity** to sustain reliable and timely COVID-19 results by **implementing a rational and targeted testing strategy**



COVID-19 Master Plan a framework for action on preparedness



Incident management, planning, administration and coordination

- Daily EOC meetings with 25 PHDs activated
- Strengthen provincial capacity for using EOC/IMS and multisource surveillance for risk assessment and decision making.



Laboratory

- >97,000 tests conducted since Feb 19
- Genomic Sequencing – B.1.1.7 importation event
- Serology – RT-PCR negative links
- Support and sustain existing diagnostics labs



Surveillance and risk assessment

- Identifying 3C settings and new clusters for prioritized investigation
- MOH visited/visiting health centers in the affected provinces to review ILI data and support detection efforts by coordinating specimen collection for ILI patients.



Healthcare delivery, pathways, costs and financial protection

- MOH is conducting the readiness check of clinical management for large scale community transmission.
- MOH DHS is finalizing version 3.0 of the clinical guidelines.



COVID-19 Master Plan a framework for action on preparedness



Non-pharmaceutical public health measures

- **1st layer- 3 Do and 3 don't**
Implemented - nationwide as per the RGC Notifications.
 - **2nd Layer- Limit social gathering**
 - **3rd Layer-Restriction of movements**
- Others:** Schools closures nationwide as per RGCs notifications



Community engagement

- 3C alert announcements, high-risk groups call for testing, quarantine do's and don'ts, quarantine, contact tracing materials have been developed and disseminated
- NCHP is revising COVID-19 booklet for VHSG, CCWC and Village Chiefs to include information about vaccines, which will be disseminated nation-wide.



Strategic communications

- MOH and other ministries continue to issue notifications on NPIs and strengthening COVID-19 measures
- MOH continue to issue 3C hotspot updates in four languages (Chinese, Vietnamese, Khmer and English)



Operational logistics and financing

- Support all 7 seven focus areas in procurement of equipment, reagents, PPE, and other supplies
- Incentives for HCWs, RRTs, quarantine officers
- Increase efficiencies in health sector to preserve funding

